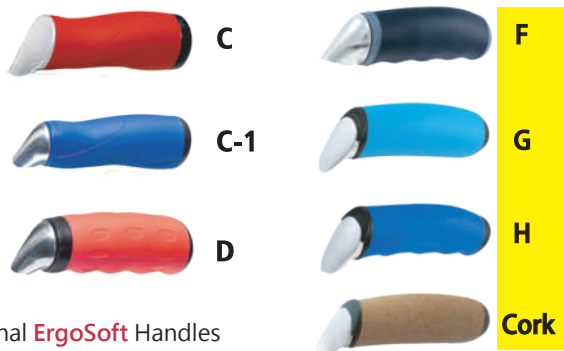


Concrete Tools

Cement Trowels

Flexible, tempered and polished spring steel blade. aluminum alloy shank & blade are mounted and fastened with strong rivets. special designed ergosoft handles. use for concrete or plaster finishing.



Optional ErgoSoft Handles

Flexible, tempered and polished spring steel blade. aluminum alloy shank & blade are mounted and fastened with strong rivets. Use for concrete or plaster finishing. Comfortable hardwood handle.



- 16202** 4" x 12" Cement Trowel.
- 16204** 4" x 14" Cement Trowel.
- 16206** 4" x 16" Cement Trowel.
- 16252** 4" x 12" Cement Trowel, Stainless Steel Blade
- 16254** 4" x 14" Cement Trowel, Stainless Steel Blade
- 16256** 4" x 16" Cement Trowel, Stainless Steel Blade



16080 Economy Trowel 12" , Plastic handle.

Made from stainless or carbon steel, blade is rounded on both ends. ideal for pool or slab finishing. ergosoft or comfortable hardwood handle.



16596 14" x 4" Pool Trowl,Wood Handle.



- 36202** 4" x 12" ErgoSoft Cement Trowel.
- 36204** 4" x 14" ErgoSoft Cement Trowel.
- 36206** 4" x 16" ErgoSoft Cement Trowel.
- 36252** 4" x 12" ErgoSoft Cement Trowel, Stainless Steel Blade
- 36254** 4" x 14" ErgoSoft Cement Trowel, Stainless Steel Blade
- 36256** 4" x 16" ErgoSoft Cement Trowel, Stainless Steel Blade



- 36596** 14" x 4" Pool Trowl,ErgoSoft Handle.
- 36598** 20" x 5" Pool Trowl,ErgoSoft Handle.
- 36599** 16" x 4-1/2" Pool Trowl,ErgoSoft Handle.

Drywall Skimming Knife

Use to produce a radius at the edge of slab. made of stainless spring steel, long wearing and non-rusting. the turned up ends eliminate digging into concrete. with comfortable ergosoft or hardwood handle.



Ideal for window sills, closets, small areas. tempered and polished spring steel blade. aluminum alloy shank & blade are mounted and fastened with strong rivets. comfortable ergosoft or hardwood handle.



16105 7-1/2" x 3" MidGet Trowel, Wood Handle.



36105 7-1/2" x 3" ErgoSoft MidGet Trowel.



Concrete Tools

Molded very compacity with dense texture for bring sand to surface. the sponge rubber is shaped permanently cemented to a specially shaped back plate. comfortable and durable plastic handle.



16048 Molded Rubber Float.

Molded rubber sponge with lightweight plastic plate and handle. Very easy to use for bringing sand to the surface.



16047 Molded Rubber Float. Plastic handle.



Magnesium Float

Longwearing but extra-light magnesium float bevel-end and rounded corners for professional using.



17717 Magnesium Float, 16" x3-1/2" Round End.



17716 Bevel-End Cast Magnesium Float, 16" x3-1/2" .

Wood Floats

Made or select hardwood, bevel-end to prevent splitering and to make it possible to work in tight places. favorites for close form work. large comfortable wood handle.



16025 15" x3-1/2" x 5/8" Wood Floats.
16036 16" x3-1/2" x 5/8" Wood Floats.
16038 18" x3-1/2" x 5/8" Wood Floats.



16010 14" x3-1/2" x 1/2" Wood Floats, Plastic Handle.



16022 12" x4-1/2" x 5/8" Wood Floats.

Solid pine replacement handles.

16020 Float Handle, High Lift Style.



16030 Float Handle, Large Bridge Style.



16031 Float Handle, Bridge Style.





Cement Edgers

Use to produce a radius at the edge of slab. made of stainless spring steel, long wearing and non-rusting. the turned up ends eliminate digging into concrete. with comfortable ergosoft or hardwood handle.



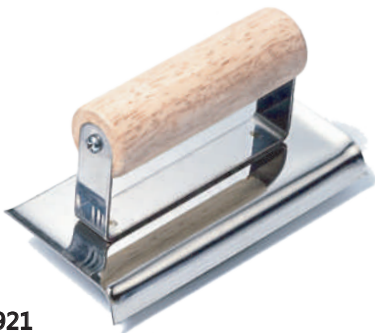
36922
6" x 3-1/2"
Flat Edger Stainless, ErgoSoft Handle.



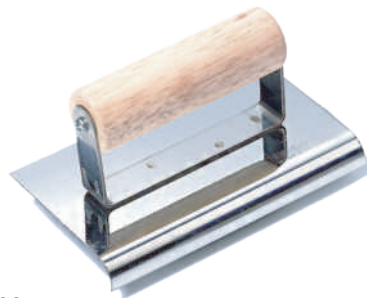
36921
6" x 3"
Stainless Edger, ErgoSoft Handle.



36924
11" x 4"
Flat Edger Stainless, ErgoSoft Handle.



16921
6" x 3"
Stainless Edger, Wood Handle.



16922
6" x 3-1/2"
Flat Edger Stainless, Wood Handle.



Economy grade, galvanized steel blade with turned smooth wood handle.

Cement Groover

Use to lead edge and cut a sharp groover with clean finish. made of stainless spring steel, long wearing and non-rusting. the turned up front prevents indentation of concrete. rivet free for more durable using and easy to clean. with comfortable ergosoft or hardwood handle.



16900 6" x3" Cement Groover, Wood Handle.



16901
6" x3"
Stainless Groover, Wood Handle.



Economy grade, galvanized steel blade with turned smooth wood handle.



36901
6" x3"
Stainless Groover, ErgoSoft Handle.



16920 6" x3" Cement Edge Wood Handle.



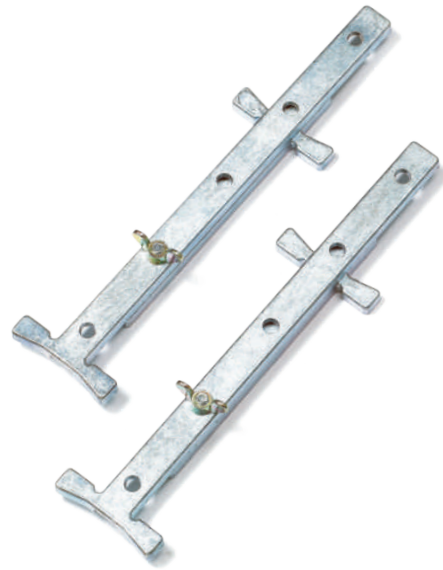
16570 Twister.



16575 Wire Tie Tying Tool, pull the binder to tie wire automatically.



31058 Line Pins.



31057 Adjustable Line Stretchers.



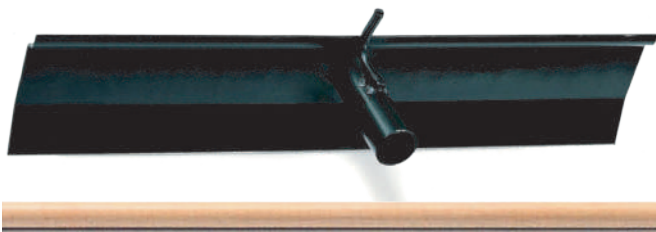
16700 Spiked Sandals.



Durable bristles set into solid thick wood holder. User for fine-textured finish.



31060 Concrete Brooms.



16530 Concrete Placer, w/54" Wood Pole.

Concrete Tools

Special designed with extended slide at the bottom edge increases the contacting area for fingers. case surfaces are covered with leather paint(rubberized), which is anti-slip. Equipped with a pause(slow down) button which is much better for using and safety.

Made of ABS+PC material, stronger & durable. Equipped with a PAUSE(slow down) button which is much better for using and safety. Ergonomically designed body for more comfortable holding.



- 31323** 3M/10FT Rubberized Measuring Tape, Blade 13mm Wide.
- 31325** 5M/16FT Rubberized Measuring Tape, Blade 19mm Wide.
- 31326** 5M/16FT Rubberized Measuring Tape, Blade 25mm Wide.
- 31328** 8M/26FT Rubberized Measuring Tape, Blade 25mm Wide.
- 31329** 10M/33FT Rubberized Measuring Tape, Blade 25mm Wide.

- 31313** 3M/10FT Ergo Measuring Tape, Blade 13mm Wide.
- 31315** 5M/16FT Ergo Measuring Tape, Blade 19mm Wide.
- 31316** 5M/16FT Ergo Measuring Tape, Blade 25mm Wide.
- 31318** 8M/26FT Ergo Measuring Tape, Blade 25mm Wide.
- 31319** 10M/33FT Ergo Measuring Tape, Blade 25mm Wide.



- 31625** 5M/16FT Measuring Tape, Blade 19mm Wide.
- 31626** 5M/16FT Measuring Tape, Blade 25mm Wide.
- 31628** 8M/26FT Measuring Tape, Blade 25mm Wide.

- 31460** 10M/33FT Fiber Measuring Tape.
- 31461** 15M/50FT Fiber Measuring Tape.
- 31462** 20M/66FT Fiber Measuring Tape.
- 31463** 30M/100FT Fiber Measuring Tape.
- 31464** 50M/165FT Fiber Measuring Tape.



31380 Fiberglass Tape 30M/ 100FT.

31520 Working Measurer -Tri-fold w/6" Wheel.



- 31350** 5M/16FT Measuring Tape, Blade 19mm Wide.
- 31351** 5M/16FT Measuring Tape, Blade 25mm Wide.
- 31352** 6M/20FT Measuring Tape, Blade 25mm Wide.
- 31353** 7.5M/25FT Measuring Tape, Blade 25mm Wide.
- 31355** 8M/26FT Measuring Tape, Blade 25mm Wide.
- 31356** 10M/33FT Measuring Tape, Blade 25mm Wide.

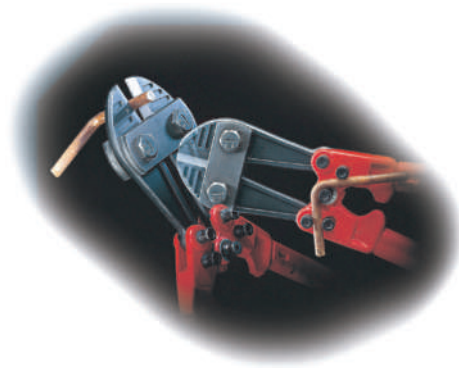


- 31370** 3M/10FT Measuring Tape, Blade 16mm Wide.
- 31371** 5M/16FT Measuring Tape, Blade 19mm Wide.
- 31372** 5M/16FT Measuring Tape, Blade 25mm Wide.
- 31373** 7.5M/25FT Measuring Tape, Blade 25mm Wide.
- 31374** 8M/26FT Measuring Tape, Blade 25mm Wide.
- 31375** 10M/33FT Measuring Tape, Blade 25mm Wide.



- 31360** 3M/10FT Measuring Tape, Blade 16mm Wide.
- 31361** 5M/16FT Measuring Tape, Blade 19mm Wide.
- 31362** 5M/16FT Measuring Tape, Blade 25mm Wide.
- 31363** 7.5M/25FT Measuring Tape, Blade 25mm Wide.
- 31364** 8M/26FT Measuring Tape, Blade 25mm Wide.
- 31365** 10M/33FT Measuring Tape, Blade 30mm Wide.

Drop forged Chrome-Moly steel, available to cut & bend rod steel for desired length and angle from 0-90 or 90-135 degree.



37150 Bend & Bold Cutter.



- 37160** 12" Bolt Cutter.
- 37161** 14" Bolt Cutter.
- 37162** 18" Bolt Cutter.
- 37163** 24" Bolt Cutter.
- 37164** 30" Bolt Cutter.
- 37165** 36" Bolt Cutter.



- 29100** Dura Grip Screwdriver, Slot.
- 29200** Dura Grip Screwdriver, Philip.

Concrete Tools



30350 SDS Concrete Impact Drill Bits.



37178 Tubing Crimper Tool.



37170 Plastic Pipe Cutter, Economy 42 mm.



37172 Plastic Pipe Cutter, Heavy Duty 42 mm.



37174 Plastic Pipe Cutter, Gun Type 42 mm.



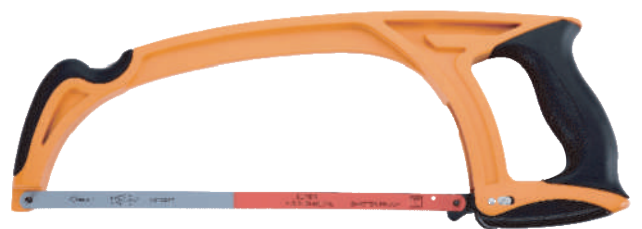
21806 Adjustable Wrench.



21826 Ratcheting Adjustable Wrench.



37180 Cement Fiber Sheet Cutter.



31145 Hack Saw w/Comfort Grip.



37176 Hose Cutter, 25 mm.



31140 Hack Saw.